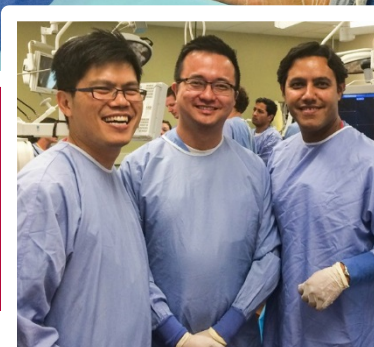
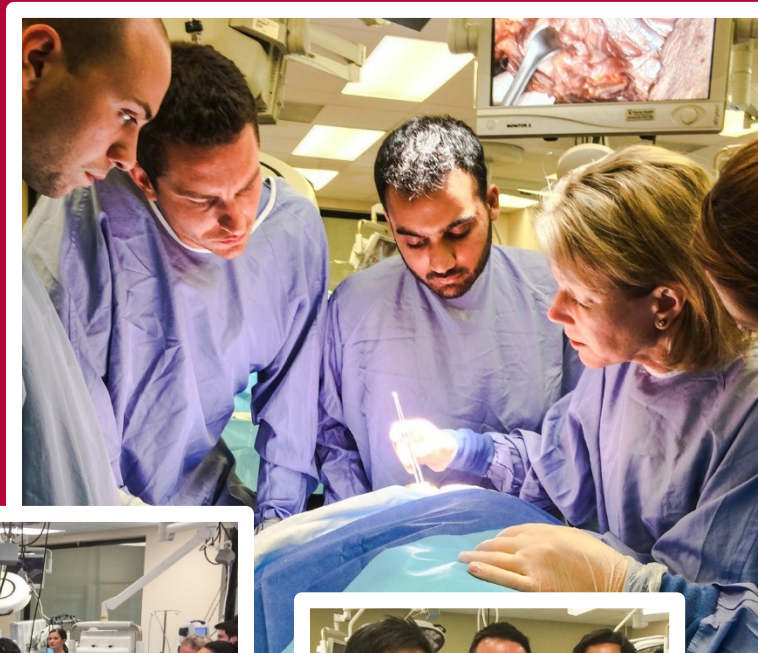


**102<sup>nd</sup> ANNUAL**

# **Anatomy and Histopathology of the Head, Neck and Temporal Bone**



**SUNDAY, JULY 9, THROUGH FRIDAY, JULY 14, 2017**

Glick Eye Institute, 1160 W. Michigan Street, Room 103, Indianapolis, Indiana  
Indiana University School of Medicine (Medical Center Campus),  
635 Barnhill Drive, Surgical Skills Center MSB 2001, Indianapolis, Indiana  
For the complete course agenda please [click here](#).



**SCHOOL OF MEDICINE**  
INDIANA UNIVERSITY

Department of Otolaryngology-Head and Neck Surgery  
Division of Continuing Medical Education

## Course Description

The Department of Otolaryngology–Head and Neck Surgery and the Division of Continuing Medical Education of the Indiana University School of Medicine are proud to present the 102nd Annual Anatomy and Histopathology of the Head, Neck and Temporal Bone. This week-long comprehensive, interdisciplinary program is the oldest postgraduate course of any discipline in this country and the premier review of histopathology and anatomy of the head and neck.

Designed for physicians, this course reviews head and neck histopathology and anatomy with a focus on clinical application, and covers contemporary state-of-the-art management across all aspects of Otolaryngology. Lectures will be given by Indiana University faculty as well as internationally renowned distinguished guest lecturers.

Participants will have the opportunity to participate in daily cadaver dissections focusing on actual surgical techniques. Procedures covered include microvascular free tissue transfer, rhinoplasty, head and neck surgery including laryngectomy, parotidectomy, thyroidectomy, neck dissection, tympano-mastoidectomy and lateral skull base surgery, as well as endoscopic sinus and skull base surgery. Dissections will be conducted at the state-of-the-art Indiana University School of Medicine's Surgical Skills Center that is outfitted to provide a safe environment that promotes the observation, repetition, acquisition and assessment of surgical skills. Each participant will have an opportunity to drill a mastoidectomy and perform middle ear dissections in our 16-station temporal bone lab. Finally, participants will have access to cochlear implant and ossicular reconstruction simulations.

This course is an unrivaled opportunity for participants to gain a thorough understanding of the applied anatomy of the head and neck.

## Course Objectives

At the conclusion of this program, participants should be able to:

- Discuss in depth key anatomic relationships pertinent to care of patients with disorders of the head, neck and temporal bone.
- Identify principles for head and neck reconstruction, including techniques for harvest.
- Describe the histopathology of the head, neck and temporal bone.

## Accreditation Statement



Indiana University School of Medicine is accredited by the Accreditation Council for Continuing Medical Education to provide continuing medical education for physicians.

## Designation Statement

Indiana University School of Medicine designates this live activity for a maximum of **51.75 AMA PRA Category 1 Credits™**. Physicians should only claim credit commensurate with the extent of their participation in the activity.

## Faculty Disclosure Statement

In accordance with the Accreditation Council for Continuing Medical Education (ACCME) Standards for Commercial Support, educational programs sponsored by Indiana University School of Medicine (IUSM) must demonstrate balance, independence, objectivity, and scientific rigor. All faculty, authors, editors, and planning committee members participating in an IUSM-sponsored activity are required to disclose any **relevant financial interest or other relationship** with the manufacturer(s) of any commercial product(s) and/or provider(s) of commercial services that are discussed in an educational activity.

## Fee

**PHYSICIANS IN PRACTICE: \$1999 (Entire Course)**

**PHYSICIANS IN PRACTICE: \$600 (Single Day)**

**RESIDENTS IN TRAINING: \$1499 (Entire Course)**

**RESIDENTS IN TRAINING: \$500 (Single Day)**

To ensure that each course attendee receives the highest possible educational experience, a maximum of 24 registrants will be accepted for this activity. Space is limited and available on a first come first served basis.

The course fees includes all lecture series materials (except instruments listed in this brochure), cadaver, temporal bone dissection, breakfast and lunch meals, Sinus Day dinner lecture on Wednesday, July 12th and the course reception on Monday, July 12th.

Online registration is required. Payment may be made online using MasterCard, Visa, American Express, or Discover or you may pay by check payable to Indiana University. All registration fees will be refunded if cancellation is made before June 23, 2017. A fee of \$100 will be charged if cancellation is made by July 1, 2017. No refund will be made after July 1, 2017.



**INDIANA UNIVERSITY**

DIVISION OF CONTINUING MEDICAL EDUCATION  
School of Medicine

## Guest Faculty

### Jeffrey M. Bumpous, MD, FACS

J. Samuel Bumgardner Professor  
of Otolaryngologic Surgery;  
University of Louisville School of  
Medicine; Louisville, KY

### Colin L. Driscoll, MD

Chair of Otorhinolaryngology; Professor of  
Otolaryngology; Mayo Clinic; Rochester,  
MN

### Kyle Mannion, MD, FACS

Assistant Professor of Otolaryngology;  
Head and Neck Surgical Oncologist;  
Vanderbilt University Medical Center;  
Nashville, TN

### Peter C. Revenaugh, MD

Section Head, Facial Plastic & Reconstructive  
Surgery; Director, Facial Nerve Disorders  
and Rehabilitation Program; Assistant  
Professor of Otorhinolaryngology-Head  
and Neck Surgery; Rush University  
Medical Center; Chicago, IL

### Raj Sindwani, MD, FACS, FRCS

Vice Chairman and Section Head;  
Rhinology, Sinus and Skull Base Surgery;  
Head and Neck Institute; Co-Director,  
Minimally Invasive Crania Base and  
Pituitary Surgery Program, Cleveland Clinic;  
Cleveland, OH

### Matthew E. Spector, MD

Assistant Professor, University of Michigan  
Medicine; Ann Arbor, MI

### Bruce K. Tan, MD, MSCI, FACS

Assistant Professor of  
Otolaryngology; Northwestern  
University Feinberg School of  
Medicine; The Sinus and Allergy  
Center of Northwestern University;  
Chicago, IL

### Travis T. Tollefson, MD, MPH, FACS

Professor and Director, University of  
California Davis Health System,  
Department of Otolaryngology; Facial  
Plastic and Reconstructive Surgery;  
Director of Faculty Mentoring  
Otolaryngology-Head and Neck  
Surgery; Sacramento, CA

### Randal S. Weber, MD, FACS

Professor, Department Chair, John  
Brooks Williams and Elizabeth  
Williams Distinguished University  
Chair in Cancer Medicine,  
Department of Head and Neck  
Surgery; The University of Texas MD  
Anderson Cancer Center; Houston,  
TX

## AGENDA

**SUNDAY, JULY 9,  
through FRIDAY, JULY 14, 2017**

### Course Co-Directors:

Marion Everett Couch, MD, PhD, MBA,  
FACS; Jonathan Y. Ting, MD, MS;  
and Charles W. Yates, MD

### Section Directors:

Day 1 — Head and Neck Reconstruction Co-Directors:  
Avinash V. Mantravadi, MD; and Taha Z. Shipchandler,  
MD, FACS

Day 2 — Facial Plastics Co-Directors:  
David M. Chan, MD and Taha Z.  
Shipchandler, MD, FACS

Day 3 — Endocrine and Salivary Gland:  
Cecelia E. Schmalbach, MD, MSc, FACS

Day 4 — Sinus Co-Directors:  
Jonathan Y. Ting, MD, and Elisa A. Illing, MD

Day 5 — Neck and Larynx Co-Directors:  
Chad E. Galer, MD, FACS; and Bruce H. Matt, MD,  
MS, FAAP, FACS

Day 6 — Temporal Bone Co-Directors:  
Charles W. Yates, MD and Rick F. Nelson,  
MD, PhD

## Indiana University School of Medicine Faculty

Benjamin P. Anthony, MD

William Beeson, MD

Sarah J. Burgin, MD

David M. Chan, MD

Aaron A. Cohen-Gadol, MD, MSc

Marion Everett Couch, MD PhD MBA, FACS

John P. Dahl, MD, PhD, MBA

Chad E. Galer, MD, FACS

Mark Hamilton, MD, FACS

David Hernandez, MD

Elisa A. Illing, MD

Avinash V. Mantravadi, MD

Bruce H. Matt, MD, MS, FAAP, FACS

Robert D. McQuiston, MD

Richard T. Miyamoto, MD, MS, FACS

Kristine Mosier, DMD, PhD

Rick F. Nelson, MD, PhD

Stephen W. Perkins, MD

Scott E. Phillips, MD, FACS, FFAOA

Hadley E. Ritter, MD

Cecelia E. Schmalbach, MD, MSc, FACS

Mark F. Seifert, PhD

Mitesh V. Shah, MD

Taha Z. Shipchandler, MD, FACS

Michael W. Sim, MD

Don-John Summerlin, DMD, MS

Jonathan Y. Ting, MD, MS

Donald Wong, PhD

Charles W. Yates, MD

Abideen O. Yekinni, MD, FACS

Richard Zeph, MD, FACS



## Lodging Information

For overnight accommodations, please visit [www.marriott.com](http://www.marriott.com) and choose from the Springhill Suites, Marriott Courtyard, or JW Marriott. All three Marriott hotel properties are located together in downtown Indianapolis and offer easy access to the Indiana University School of Medicine campus.

## Location Information

This program is being presented on the Indiana University School of Medicine campus. **For registration and lecture locations on campus, see daily course agenda online at <http://cme.medicine.iu.edu/courses>**

**Parking is available in the Riley Outpatient Center (ROC) Garage, 575 Riley Hospital Drive. Please do NOT park in Simon Family Tower Garage.**

## Interstate Access

To reach the Indiana University School of Medicine campus:

- **From I-65:** (North or South), take the Dr. Martin Luther King Jr. Street/West Street Exit #114; travel south to Michigan Street, then turn west (right) toward the hospitals. Turn right on Riley Hospital Dr. to access Riley Outpatient Center Garage. Turn right to park in the garage.
- **From I-70:** (East or West), use Exit #79A; drive north on West Street to Michigan Street, then turn west (left) toward the hospitals. Turn right on Riley Hospital Dr. to access Riley Outpatient Center Garage. Turn right to park in the garage.
- **Walking out of the Riley Outpatient Center (ROC) Garage:** Exit the parking garage at street level using the main (north) doors, turn right then turn right again behind the parking garage beside Fesler Hall. Continue straight ahead; pass the courtyard on the left and Coleman Hall on the right. Glick Eye Institute will be on the right with the entrance on the east side of the building.

## Further Information



We want everyone to feel welcome at this and other CME events. If you have a disability and need an accommodation to participate in this program, we will try to provide it. Please contact the CME office at 317-274-0104 before you come to the event. At least 72 hours of notice may be necessary.



<http://cme.medicine.iu.edu>

# 102<sup>nd</sup> Annual Anatomy and Histopathology of the Head, Neck and Temporal Bone

SUNDAY, JULY 9, THROUGH FRIDAY, JULY 1, 2017

ONLINE REGISTRATION REQUIRED

REGISTER and PAY ONLINE  
at <http://cme.medicine.iu.edu/courses>

## Materials

Participants must bring the following instruments for cadaver dissection:

- Blades (10, 11, 15)
- Metzenbaum scissors
- Three (3) mosquito hemostats
- Three (3) Allis clamps
- Takahashi forceps
- Two (2) Sinn retractors
- Ocular loupes
- Two (2) Army/Navy retractors
- Straight Kerrison rongeurs
- Needle holder
- Killian
- 3–5mm chisel or osteotome
- Headlight (AC adapted)
- Freer elevator
- Nasal specula (Vienna and long)
- Scrubs

Indiana University School of Medicine  
Division of Continuing Medical Education  
410 W. 10th Street, HS 2100  
Indianapolis, IN 46202  
Phone: (317) 274-0104